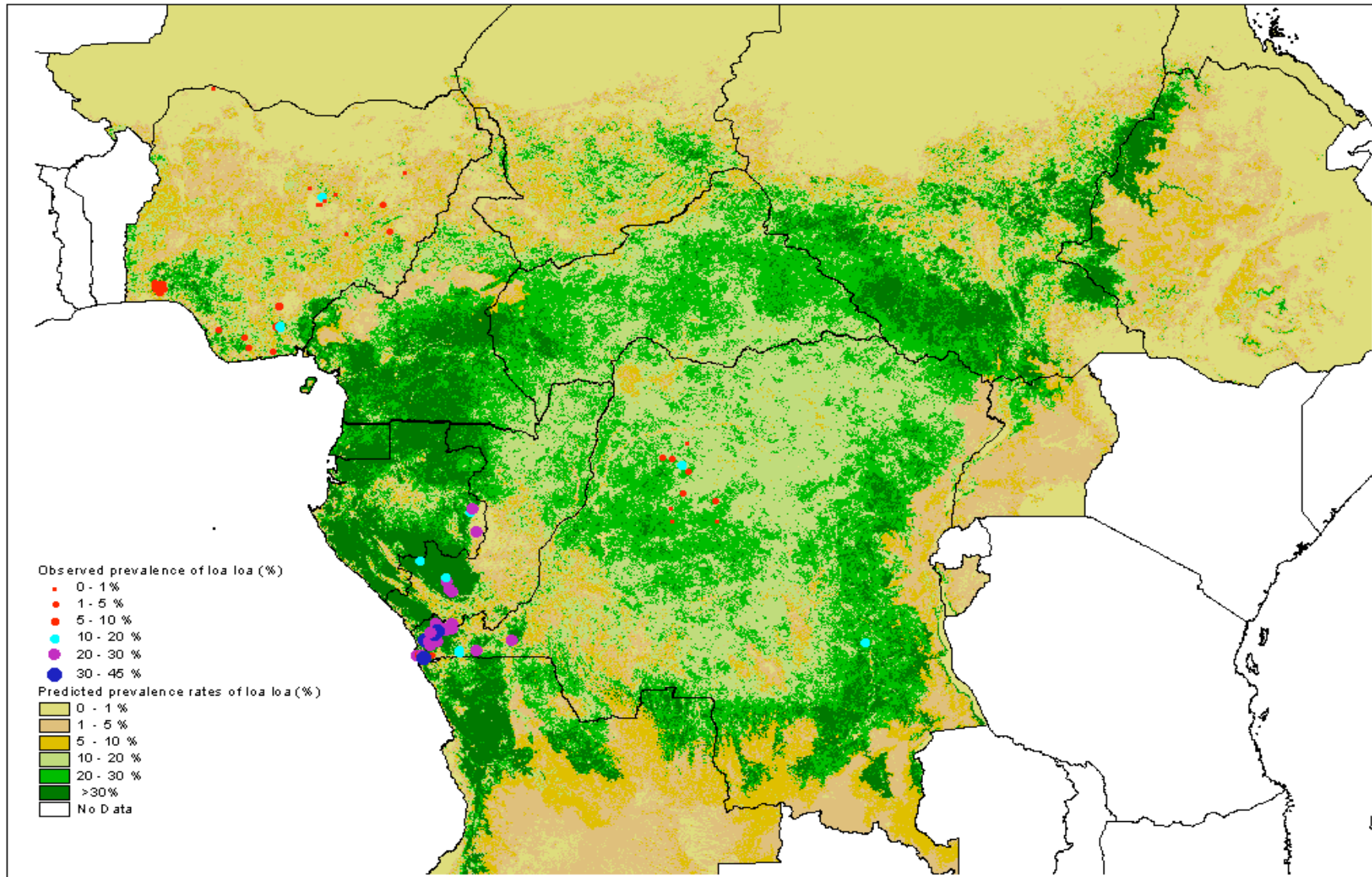


Distribution of *Loa loa*: predicted and observed (from Thompson *et al.*, 2001)



From: Thomson M, Obsomer V, Connor SJ *et al.* (2001) Determining the spatial overlap between the distribution of *Loa loa* and onchocerciasis in APOC countries using GIS and Remote Sensing Technologies: Final Report to APOC 15/10/2001. Liverpool School of Tropical Medicine, Liverpool, 2001.